

# ECOTAXA

IMPORTING/EXPORTING DATA & IMAGES

into

THE WEB APPLICATION ECOTAXA

Quantitative Imaging Platform of Villefranche sur Mer (PIQv)

Elineau&Picheral



## IMPORTANT NOTE:

Check that you have the latest version of Zooprocess  
(<https://sites.google.com/view/piqv/zooprocess>)

Date	Name operator	Object	Chapter
2019/01/25	Elineau Amanda	update	2
2020/05/20	Elineau Amanda	update	2

## Summary

1. Maintain PkID Validation .....	2
2. FTP Connexion.....	3
3. Procedures and organization of data into FTP.....	5
3.1 FlowCAM & ZooScan .....	5
3.2 UVP.....	5
4. Memory management .....	5
5. Importation procedure into Ecotaxa (images & TSV) .....	5
6. Exportation procedure .....	7
7. Memory management .....	8

# 1. Maintain PkID Validation

You have some projects already predicted/classified with PkID and you want to export them into Ecotaxa keeping the classification. (If your projects are unclassified, see directly the next chapter).

At this step :

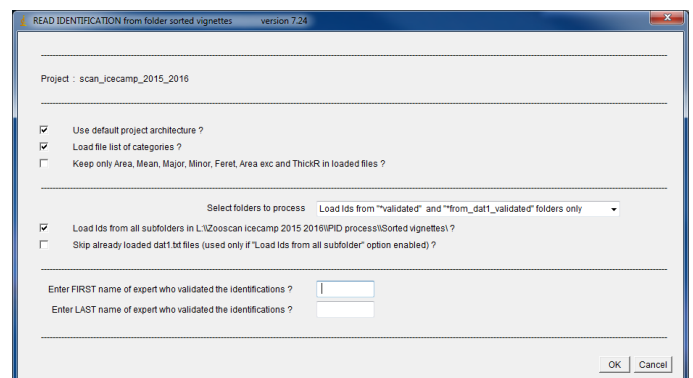
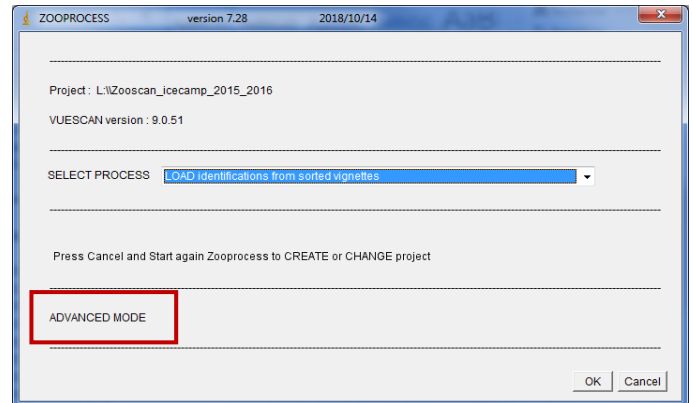
- There is 1 dat1.pid file per sample in the folder: Zooscan\_nameoftheproject/PID\_process/Pid\_results
- There is 1 subfolder called “nameofthesample\_validated” in the folder:  
Zooscan\_nameoftheproject/PID\_process/Sorted\_vignettes  
In each subfolder you have all the images .jpg + 1 .txt file called “Analysis\_nameofthesample\_dat1.txt”

NB: The number of objects between the pid file and the Analysis txt file **must be** the same

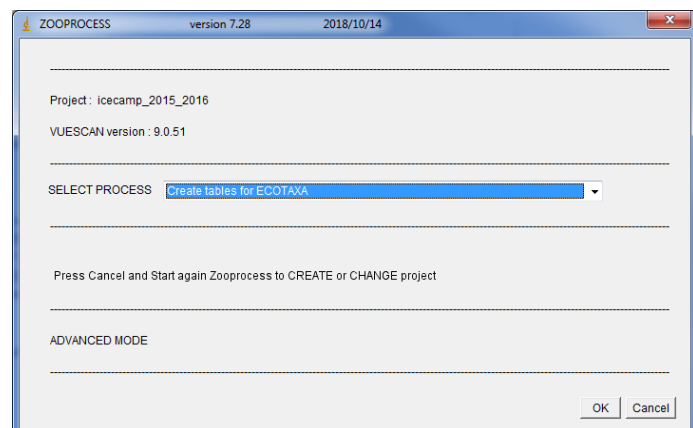
Open Zooproccess in Advanced Mode:

- Load identifications from sorted vignettes

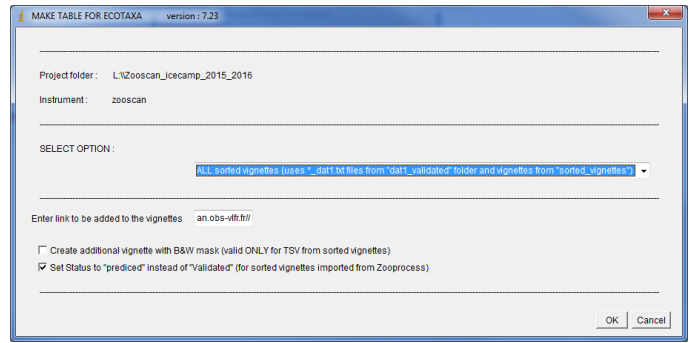
It will create 2 .txt files per sample in the folder:  
Zooscan\_nameoftheproject/PID\_process/Pid\_results/  
Dat1\_validated



- Select Create tables for Ecotaxa



- Select ALL sorted vignettes (uses\*\_dat1.txt files from “dat1\_validated” folder and vignettes from “sorted\_vignettes”)

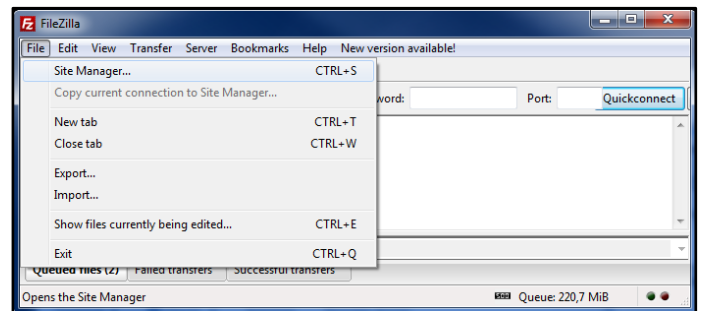


It will create 1 subfolder per sample in the folder:

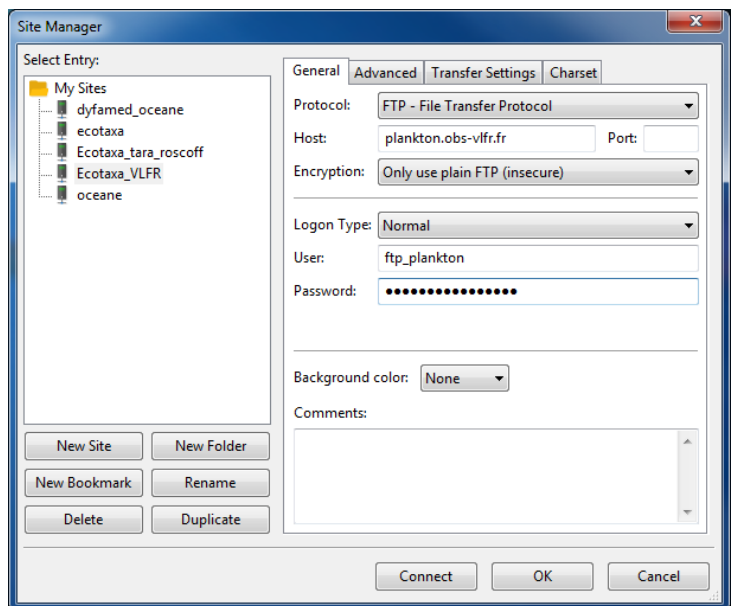
Zooscan\_nameoftheproject/ecotaxa

## 2. FTP Connexion

- Download and install FileZilla (<https://filezilla-project.org/>)
- Select File > Site Manager...

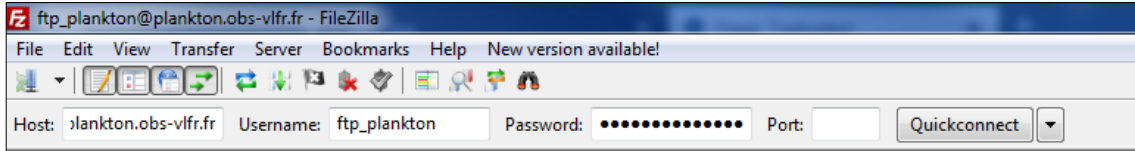


- Create a New Site called : Ecotaxa\_VLFR
- In General tag :
  - Host : plankton.obs-vlfr.fr
  - Protocol : FTP – File Transfer Protocol
  - Encryption : Only use plain FTP (insecure)
  - Logon Type : Normal
  - User : ftp\_plankton
  - Password : Pl@nkt0n4Ecotaxa

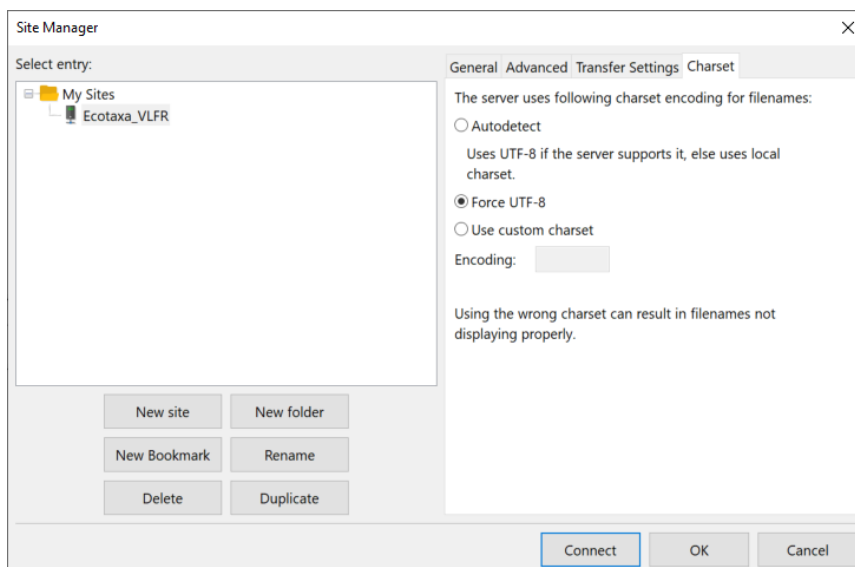


- NB: You will have a direct access by the main window

Host : plankton.obs-vlfr.fr  
Username : ftp\_plankton  
Password : Pl@nkt0n4Ecotaxa



- Filezilla doesn't like the name of files with the symbol (for ex : wp2\_20200520\_200µm)
- Select File > Site Manager... > Charset
- Select Force UTF-8



### 3. Procedures and organization of data into FTP

#### 3.1 FlowCAM & ZooScan

- Create a folder starting with your Institute name
- Drag and drop in this folder :

\*Not validated data :

the **\_work** folder from your Zooprocess project

\*Validated data (from PKId):

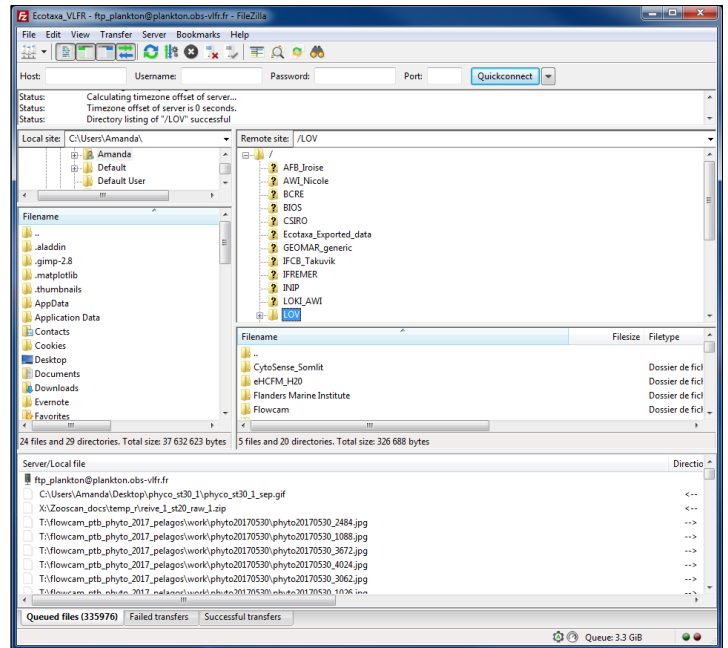
the **ecotaxa** folder from your Zooprocess project

*NB: Check that all your metadata have been correctly documented before this step.*

#### 3.2 UVP

- Create a folder starting with your Institute name
- Drag and drop in this folder your **WHOLE PROJECT**. It will permit to import both the images and the particle data in the Particle module of Ecotaxa.

*NB: Check that all your metadata have been correctly fill in before this step.*



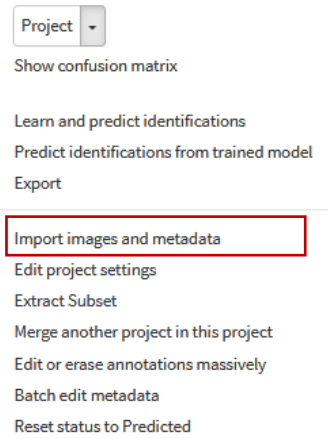
### 4. Memory management

After the importation and the checking of your data in Ecotaxa, delete your folder from the FTP.

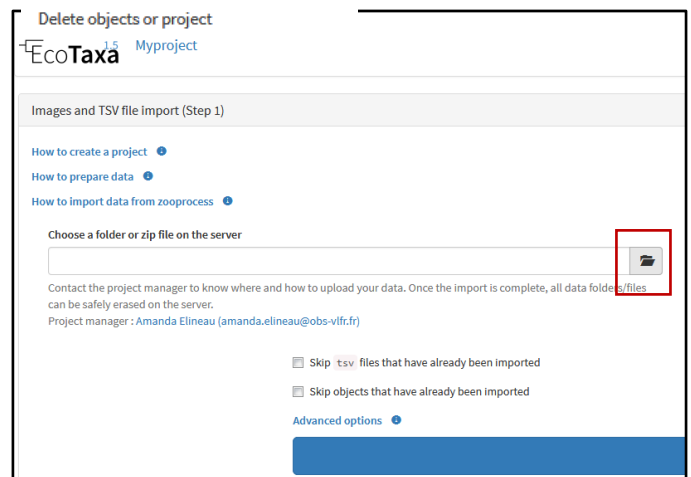
- ➔ Anyone having these writing permission on our FTP can load and download any data from this FTP. It is thus **IMPORTANT** to remove your data as soon as it has been imported into Ecotaxa.

### 5. Importation procedure into Ecotaxa (images & TSV)

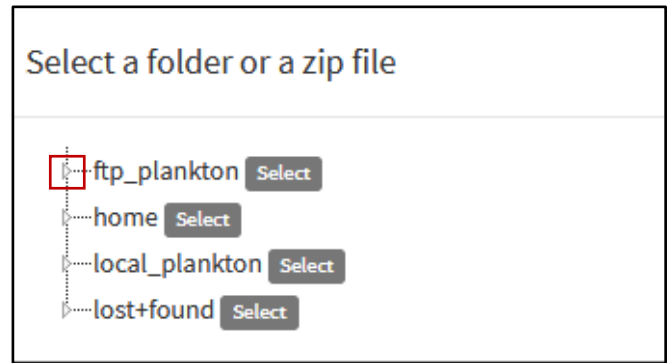
- Select Project > Import images and metadata



- Select the folder icon

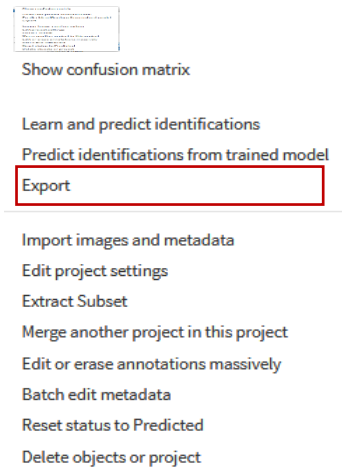


- Access to your folder by clicking on the arrow ftp\_plankton
- For FlowCAM, ZooScan and UVP5 :  
Open your project by clicking on the arrow  
Then you can **Select** the work or ecotaxa  
Folders that you imported.

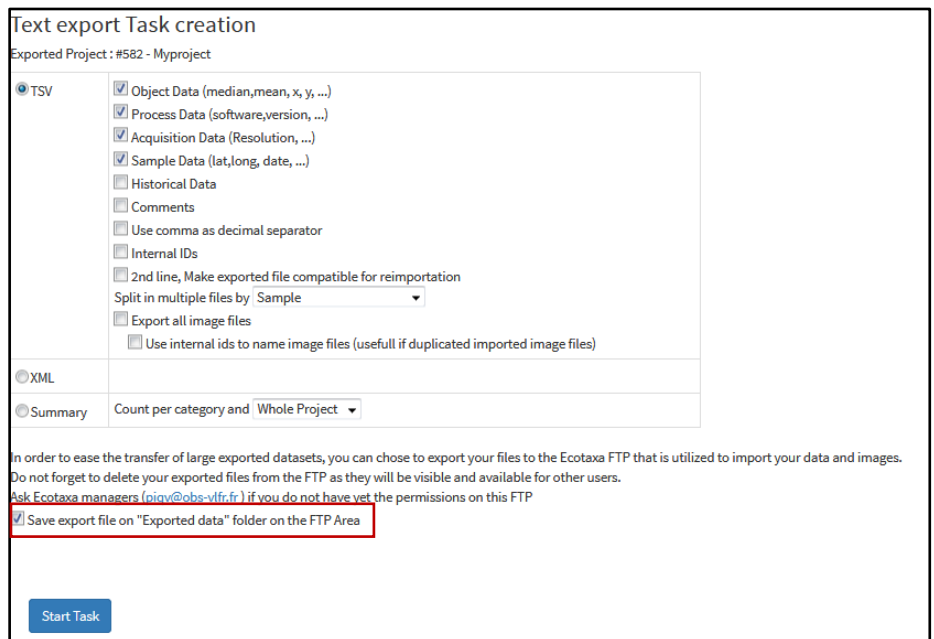


## 6. Exportation procedure

- Select Project > Export



- Select a format then check the box “Save export file on “Exported data” folder on the FTP Area”



- Click on Start Task

Task Complete :Export successfull : File 'task\_15591\_export\_582\_20181029\_1038.zip' is available on the 'Exported\_data' FTP folder

Show Task

Your data is compressed in a zip or a tsv file named automatically depending to the format that you selected :

“task\_numberofthetask\_export\_numberIDoftheproject\_AAAAMMDDoftheexport\_HHMMoftheexport.zip”

“.....\_exportimg\_......zip”

“.....\_export\_detailed\_......zip”

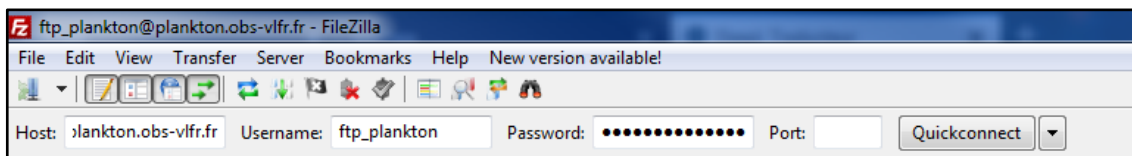
“.....\_export\_reduced\_......zip”

“.....\_export\_summary\_......tsv”

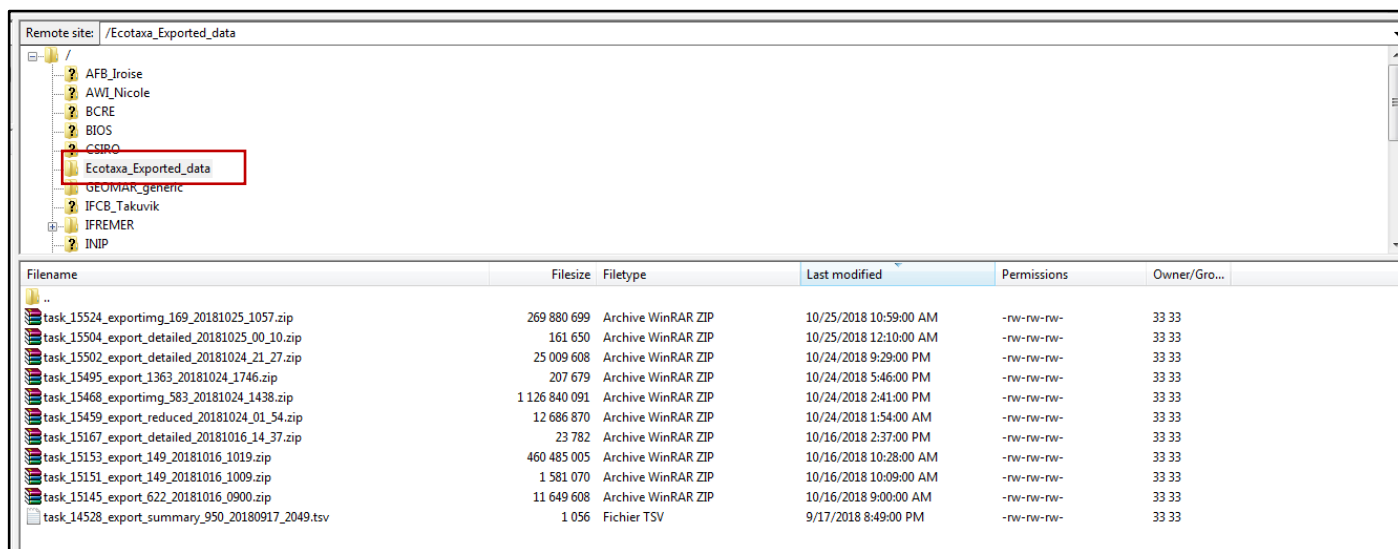


- Connect your FTP

Host : plankton.obs-vlfr.fr  
 Username : ftp\_plankton  
 Password : Pl@nkt0n4Ecotaxa



- Access to your data by clicking on Ecotaxa\_Exported\_data folder
- Drag and drop your file into your computer



## 7. Memory management

After the exportation of your data, delete your files from the FTP.

- ➔ Anyone having these writing permission on our FTP can load and download any data from this FTP. It is thus **IMPORTANT** to remove your data as soon as it has been exported.